

BLÜCHER® DRAINAGE SYSTEMS

FOR A SUSTAINABLE FUTURE



BLÜCHER®

A WATTS Brand

ABOUT US

■ Danish Design and Production

Founded in Denmark in 1965, BLÜCHER® has grown into a leading global manufacturer of stainless steel drainage systems. The BLÜCHER® Group employs more than 400 staffs worldwide.

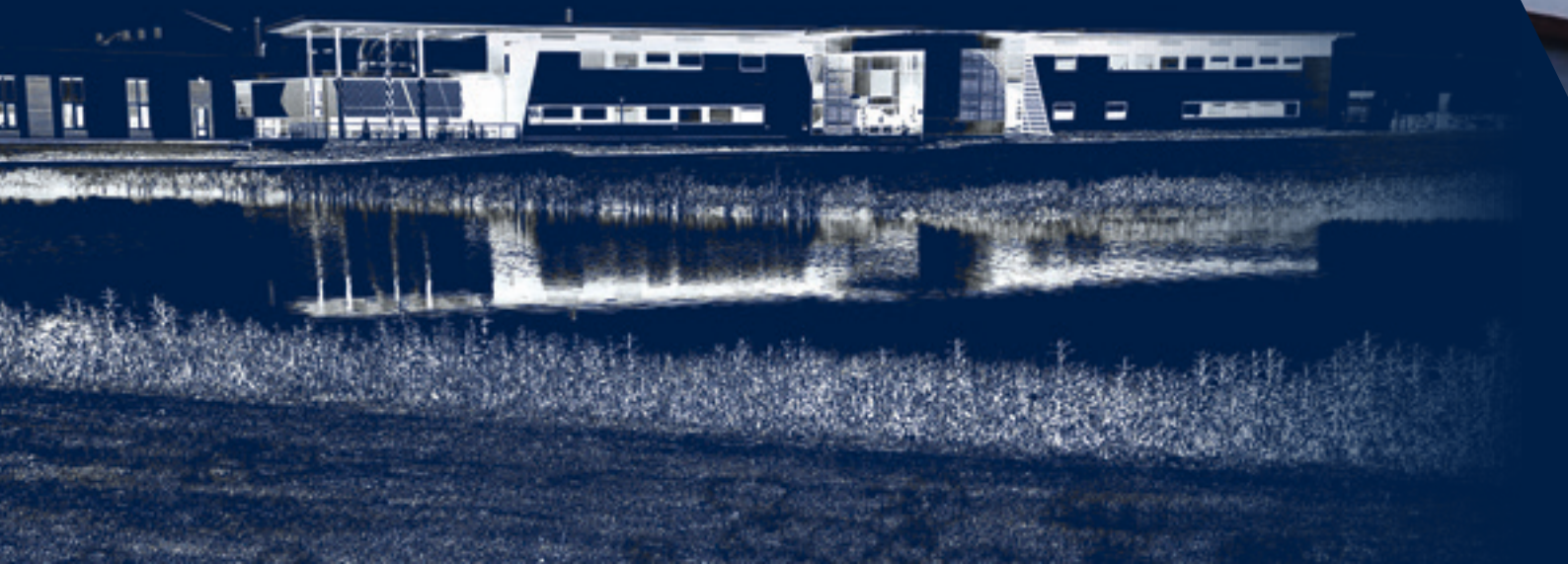
Customers all over the world appreciate our know-how, dedicated service, and common sense.

BLÜCHER® drainage products are manufactured in Denmark, using the most modern production methods and in accordance to internationally recognised quality standards, ISO 9001 and ISO 14001.

■ Safe and Sustainable Solutions for all Marine Applications

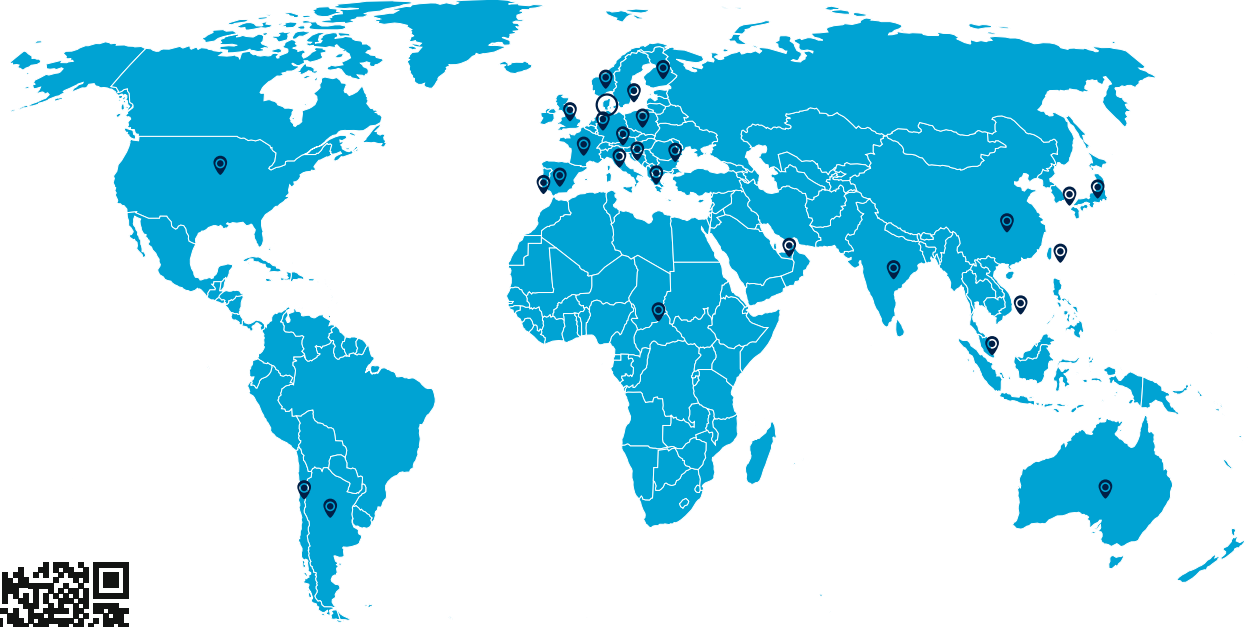
To date, BLÜCHER® drainage solutions have been installed on more than 5,000 vessels and platforms ranging from cruise liners and ferries, luxury yachts, merchant ships, navy vessels, fishing vessels as well as offshore ships and platforms.

Furthermore, the most respected marine classification societies worldwide have approved BLÜCHER® drainage system.



GLOBAL PARTNER NETWORK

BLÜCHER® IS REPRESENTED BY LOCAL SPECIALISTS WITHIN MARINE APPLICATIONS AROUND THE WORLD



- Contacts & Customer Support
- Marine Agents

APPROVALS AND CERTIFICATES

BLÜCHER® DRAINAGE SYSTEM MEETS THE HIGHEST DEMANDS WITHIN THE MARINE INDUSTRY

BLÜCHER® EuroPipe are shock and vibration tested by:

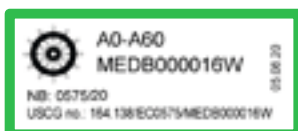


TNO Built Environment and Geosciences

SHOCK AND VIBRATION TESTED

Shock Standard BR8470 grade C, NATO STANAG 4595 and NATO STANAG 4138 with plans to further test to MIL-S-901D (or MIL-DTL-901E) and MIL-STD-167-1A standards.

Shock and vibration test report is available on request.



MARK OF CONFORMITY

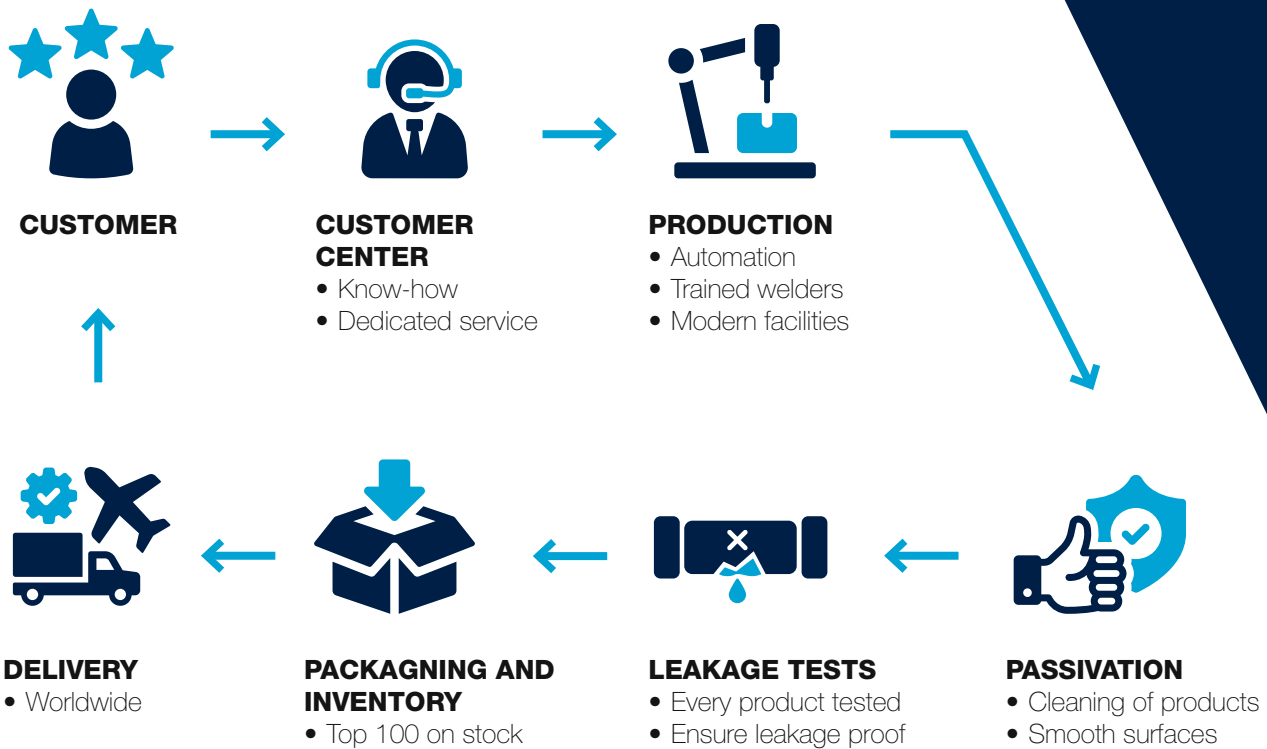
In addition to the normal product labelling, all fire approved products from BLÜCHER® are labelled with a special approval label showing the steering wheel and other relevant information.



SCAN FOR THE LATEST APPROVALS AND CERTIFICATIONS

THE CUSTOMER JOURNEY

WE ARE WITH YOU ALL THE WAY



CUSTOMIZED SOLUTIONS

In addition to the extensive standard product range, BLUCHER also offers purpose-made items on request to ensure that any drainage requirement can be satisfied.

With more than 55 years experience in developing customized drainage solutions, our know-how enables us to provide extensive engineering assistance.



THE BENEFITS OF STAINLESS STEEL PIPES



RELIABLE CONNECTIONS

BLÜCHER® EuroPipe offers the most complete product range of stainless steel drainage pipes and fittings in the market. Through three basic characteristics, specifically

- ✓ LIGHT-WEIGHT
- ✓ NON-COMBUSTIBLE
- ✓ EASY TO INSTALL

Every BLÜCHER® EuroPipe drainage product is designed to keep up the flow through reliable connections while adding value and longevity to your drainage projects, installations and business.

SEGMENTS

BLÜCHER MARINE
FOR EVERY SOLUTION

**CRUISE
& FERRIES**



**LUXURY
YACHTS**



**OFFSHORE
& WIND**



**REPAIR &
CONVERSION**



DRAINAGE SYSTEMS FOR MARINE APPLICATIONS AROUND THE WORLD

BLÜCHER® sanitary discharge systems have proven their functionality and reliability in more than 5.000 vessels.

KEEPING UP THE FLOW

BLÜCHER® is committed to leading water away and keeping up the flow in the housing, commercial, industrial and marine sectors. The marine industry relies on the performance of our solutions at sea, where durability and light weight are essential.



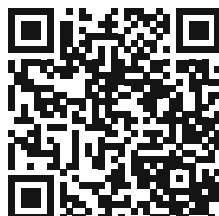
NAVAL



MERCHANT



FISHING



For complete project references and selected case stories scan the QR-code or go to <https://www.blucher.com/solutions/reference-lists>

WHERE TO USE BLÜCHER

BLÜCHER® EuroPipe

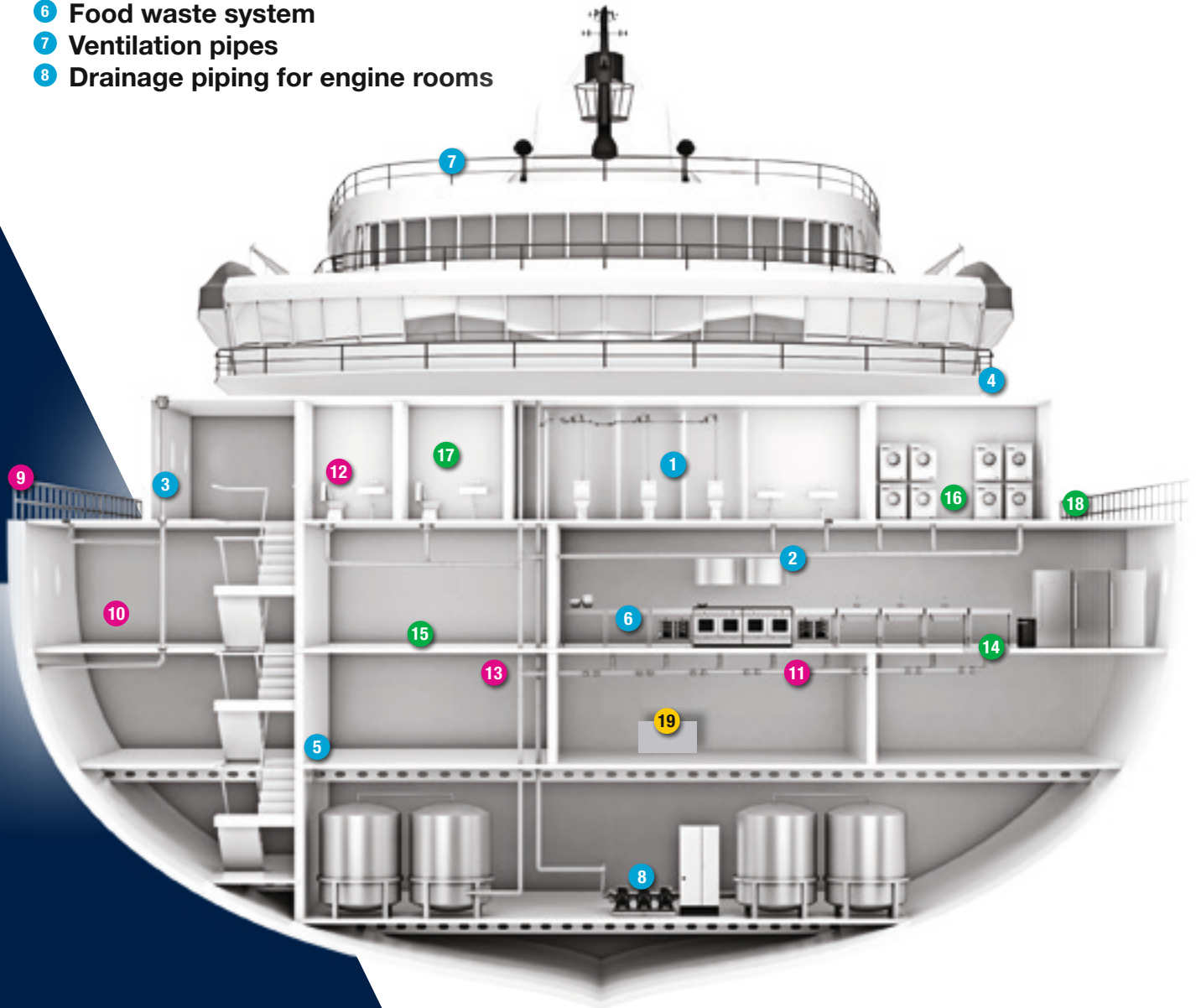
Selected applications:

- 1 Black water – vacuum & gravity
- 2 Grey water
- 3 Deck drain piping
- 4 Outside / balcony piping
- 5 Central vacuum cleaning system (CVC)
- 6 Food waste system
- 7 Ventilation pipes
- 8 Drainage piping for engine rooms

BLÜCHER® Channel

Selected applications:

- 14 Galley areas / pantries
- 15 Corridors
- 16 Laundry
- 17 Shower areas
- 18 Deck drainage



BLÜCHER® Drain Marine

Selected applications:

- 9 Balconies
- 10 Cabin areas
- 11 Galley areas
- 12 Shower drains
- 13 Public areas

19 BLÜCHER® Grease Separator

BLÜCHER®

SUSTAINABLE DRAINAGE SYSTEMS

Today our drainage systems are produced by up to 85% recycled material.

This reflects the longevity of the stainless steel and the fact that stainless steel can be recycled without loss of properties.

Stainless steel is one of the few building components possessing the unique quality that it consists of one material only and can be recycled to the same product as the original.

BLÜCHER®

FROM CRADLE TO GRAVE

Lasts longer than the vessel

BLÜCHER® drainage systems have a design life in excess of 50 years. This means that at the end of the lifetime of the vessel the BLÜCHER® products will most likely be recycled due to the strong demand for stainless steel throughout the world.

The BLÜCHER® components have no additional coatings and so are easily recycled.



DO YOU WANT
TO LEARN MORE?



SCAN THE QR CODE

APPROVED DRAINAGE SOLUTIONS FOR MARINE APPLICATIONS / INDUSTRY

ONE COMPLETE SYSTEM



■ BLÜCHER® EUROPIPE

is a complete stainless steel sanitary pipework system approved for installation in ships. The push-fit joint is completely interchangeable between either gravity or vacuum discharge systems. In addition to sanitary discharge it is also suitable for central vacuum cleaning systems, garbage disposal systems, etc.

The advantages at a glance

- All in stainless steel
- Available in OD 40, 50, 75, 110, 125, 160 and 200 mm in standard lengths from 0,15 to 6 metres
- Fast and simple installation due to push-fit socket and spigot end jointing
- Easily combined with other pipe materials
- Low weight of material and only 1-1,50 mm wall thickness
- Completely interchangeable between vacuum and gravity installations
- Designed in accordance with EN1124

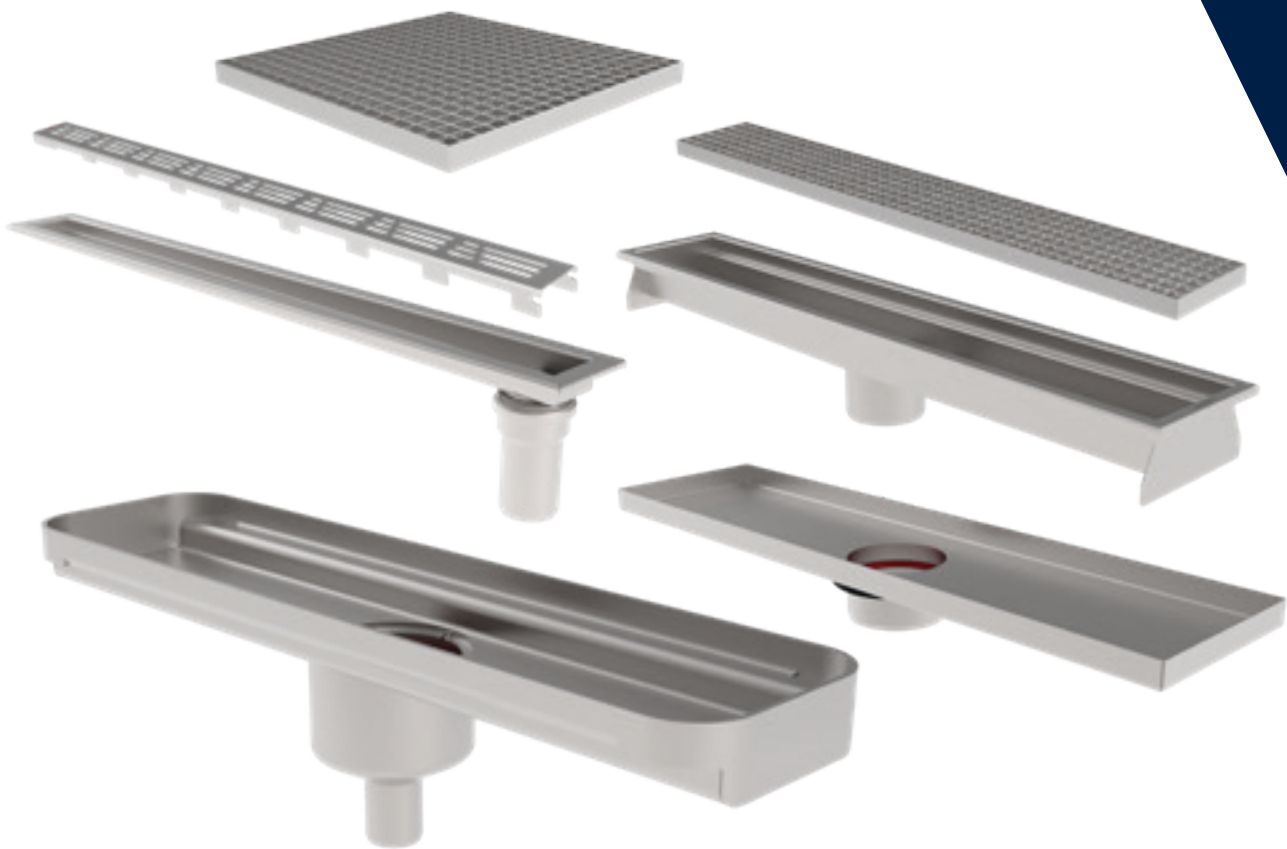


■ BLÜCHER® DRAIN MARINE

has been developed in conjunction with leading shipyards worldwide. As a result, the product offering meets the specific demands of each individual installation regardless of the deck construction.

The advantages at a glance

- All in stainless steel
- Modular system providing numerous possible combinations
- Multi-adjustable
- A solution for any deck finish
- Removable water trap providing efficient water seal and easy rodding access from above
- Protective cover on all lower parts



■ BLÜCHER® CHANNEL

stainless steel drainage channels are modular deck drainage solutions for use in galleys, pantries, door openings, outside deck areas, etc. Drainage channels are available to suit all deck finishes with a range of gratings developed to suit the varying load-bearing and flow demands.

Customised components are available on request

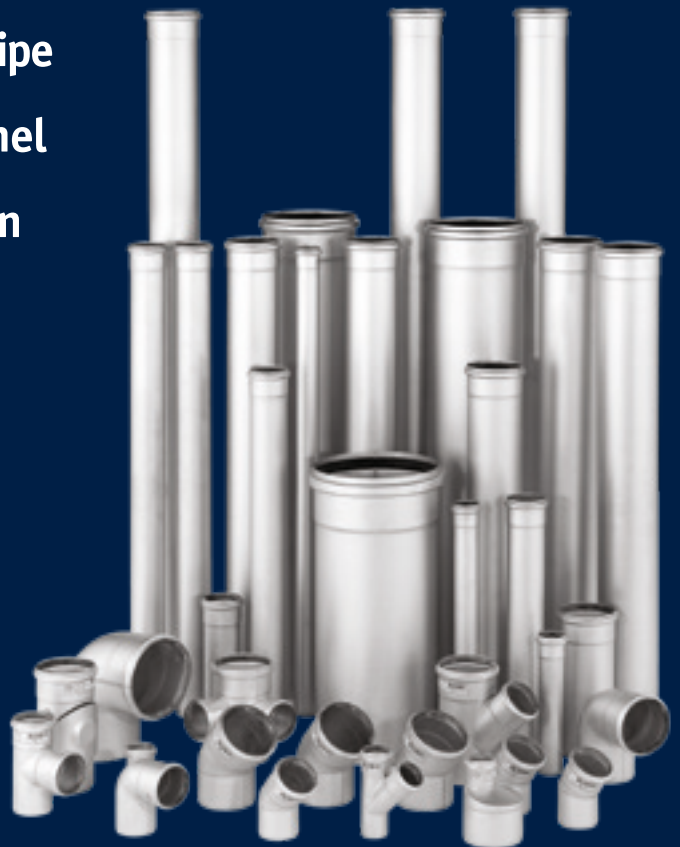
- All in stainless steel
- Modular system providing numerous possible combinations
- Multi-adjustable
- Excellent flow and self-cleansing properties
- Perfect hygiene
- Wide range of gratings



Scan to learn more about our latest product developments or go to <https://www.blucher.com/resources/literature-and-tools>

” Your drainage partner
keeps up your flow

BLÜCHER® EuroPipe
BLÜCHER® Channel
BLÜCHER® Drain



For more information,
scan the QR-code or go to
www.BLUCHER.com/solutions/marine

BLÜCHER®

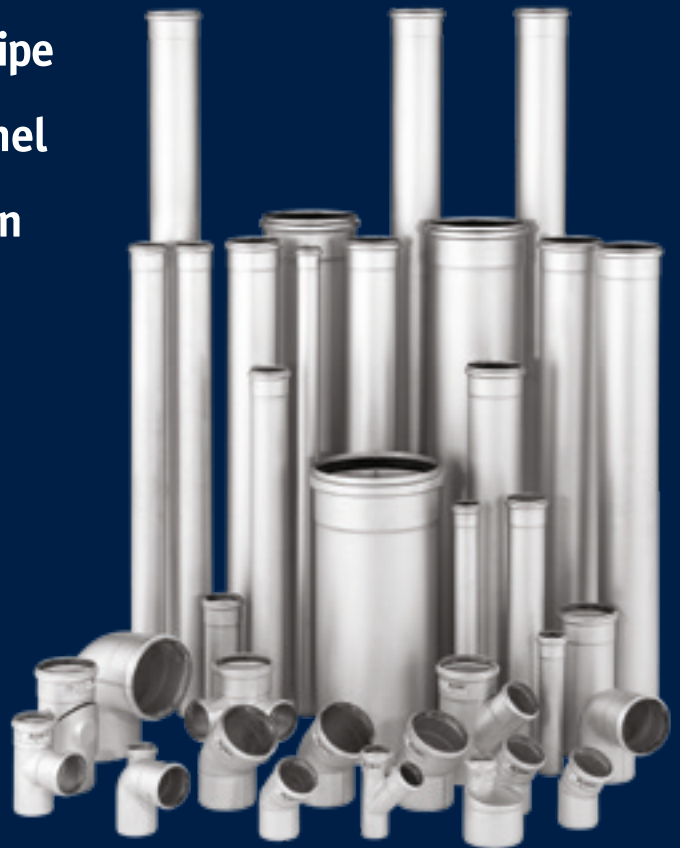
A **WATTS** Brand

T: +45 99 92 08 00 • BLUCHER.com

BLÜCHER® EuroPipe
Stainless steel drainage pipework system

” Your drainage partner
keeps up your flow

BLÜCHER® EuroPipe
BLÜCHER® Channel
BLÜCHER® Drain



For more information,
scan the QR-code or go to
www.BLUCHER.com/solutions/marine

BLÜCHER®

A **WATTS** Brand

T: +45 99 92 08 00 • BLUCHER.com

BLÜCHER® EuroPipe
Stainless steel drainage pipework system

BLÜCHER® DRAINAGE SYSTEMS

FOR A SUSTAINABLE FUTURE



BLÜCHER®

A WATTS Brand