



**“In a passenger ship project like this, many challenges can occur, but we haven’t seen any related to the piping system delivered from BLÜCHER. As shipowner, we are very pleased about the service and support we and shipyard got from BLÜCHER.”**

**Kari Granberg, Project Manager, Viking Line Abp**

© VIKING LINE

# Viking Line Glory

**Case story: One of the World’s Most Climate-Smart Vessels Is Being Built with a Complete Sanitary Drainage System for both Grey- and Black Water from BLÜCHER**

## What the client needed

At Viking Line’s new flagship, Viking Glory, keywords as sustainability, energy efficiency and innovative Nordic design are paramount. For a project like this, the client was dependent on a reliable and sustainable drainage solution that could meet the high expectations within climate smart shipping.

## Solution

A significant volume of products including a complete stainless steel sanitary discharge system for both grey- and black water with push-fit pipes, fittings, drains and channels has been installed on board this new impressive ferry. With this solution they have got a sustainable, strong and fire resistant system.

All solutions are made in AISI 316L stainless steel.

## Result (ROI)

BLÜCHER has on time delivered an environmentally friendly adapted product solution, as stainless steel has long product life and is 100% recyclable. During the whole process Viking Line has been very satisfied

with both the product support and service they received from BLÜCHER.

Estimated launch in service is early 2022 on the Turku-Åland-Stockholm route.



© VIKING LINE

## FACTS

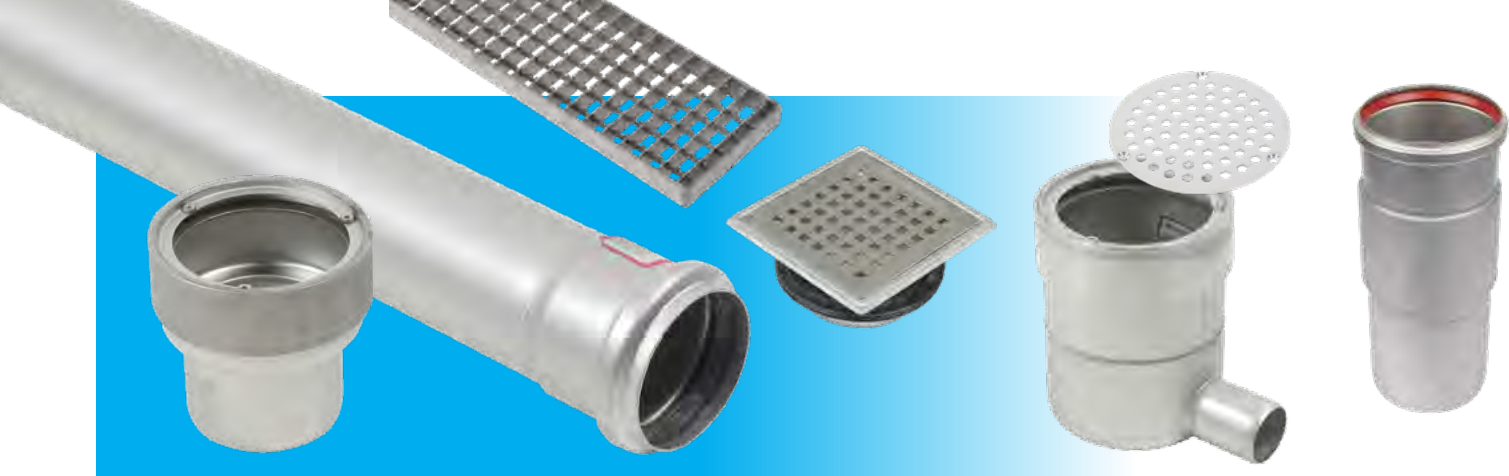
**Customer:** Viking Line Abp  
**Location:** Xiamen Shipbuilding Industry Co Ltd, China  
**Industry:** Marine  
**Vessel Type:** Ferry  
**Products Installed:** BLÜCHER® EuroPipe, BLÜCHER® Channels & BLÜCHER® Drains



**BLÜCHER®**

**A WATTS Brand**





**VIKING LINE**

Length <b>222,55 m</b>	Width <b>35 m</b>	Cruising speed <b>22,1 kn</b>	Main engine <b>33000 kW</b>
Passangers <b>2800</b>	Crew <b>200</b>	Cabins <b>898</b>	Thrusters <b>3 × 2000 kW</b>

© VIKING LINE

**Capacity:** 2,800 passengers  
**Cabins:** 922 cabins  
**Crew Capacity:** 200 people  
**Length:** 222.6 metres  
**Gross tonnage:** 63,813 tonnes  
**Cargo capacity:** 1,500 metres  
**Ice class:** 1A Super  
**Fuel:** Fuelled by liquefied natural gas (LNG)

