

# STAINLESS STEEL DRAINAGE SYSTEMS



**BLÜCHER®**

K E E P I N G   U P   T H E   F L O W

## BLÜCHER

BLÜCHER is a leading manufacturer of stainless steel drainage systems, founded in 1965 and now an international company with subsidiaries and representations worldwide.

BLÜCHER® drainage products are made in Denmark using the most modern production methods and according to the internationally recognised quality standard ISO 9001.

All products are made entirely in stainless steel grade AISI 304 or - for the most demanding applications - grade AISI 316L. This material is ideally suitable for high-quality drainage systems:

- Corrosion and fire resistant
- High strength - low weight
- Long product life expectancy

The BLÜCHER® drainage products also ensure:

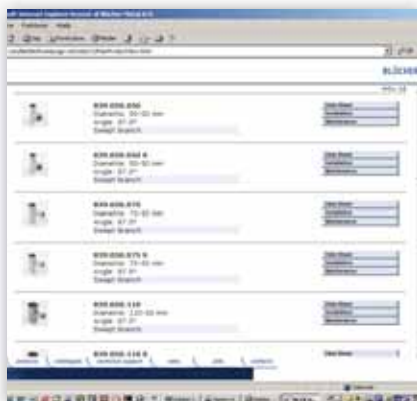
- Easy installation
- Minimal maintenance
- Aesthetic design

In addition to the extensive standard product range, BLÜCHER offers custom-made items on request to ensure that any drainage requirement can be satisfied.

---

## Products database

Visit our products database at [www.blucher.com](http://www.blucher.com) for full technical information on all BLÜCHER products.



## 3D Drawings

Product drawings available in 2D and 3D versions on CD-rom



## BLÜCHER® Drain Domestic

BLÜCHER® domestic floor drains are a modular system providing numerous possible combinations suitable for any flooring.

- Suits all tiled or flexible-sheet floor finishes
- Outlet OD 50 mm - 110 mm, vertical or horizontal
- Integrated side inlets
- Removable water trap for easy rodding access
- Multi water trap with odour-stop and flooding safeguard
- Adjustable height, rotation 360° and tilt for a perfect fit
- Compact height to suit all floor depths
- Low frame
- Grating secured with screws
- Smooth surface and aesthetic appearance

Housing

Commercial



### Where to use it

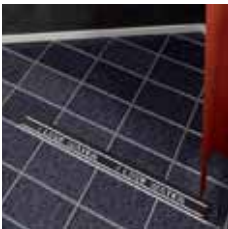
Bathrooms, showers, kitchens and changing rooms in hotels, offices, restaurants and fitness centres

## BLÜCHER® Drain Design

Whether you prefer the minimalistic or the trendy style, you will find a design grating with a pattern that reflects who you are.

The gratings fit the WaterLine shower channels, triangle drains and square drains.

- 6 sophisticated designs
- 3 different shapes, LINE, TRIO, SQUARE
- Installation against one or more walls or remote from wall

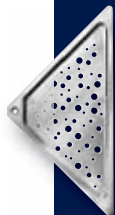
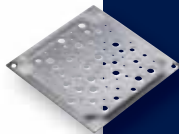
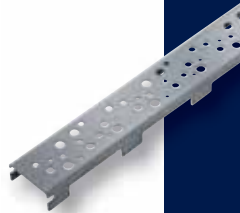
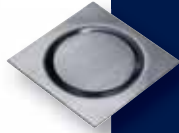
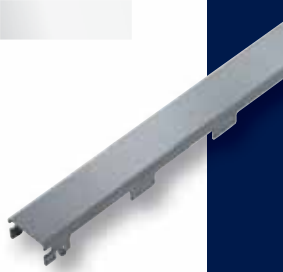


Housing

Commercial

### Where to use it

Bathrooms, showers, kitchens and changing rooms in hotels, offices, restaurants and fitness centres



## BLÜCHER® Drain Industrial

BLÜCHER® industrial drains are a modular system providing numerous possible combinations and a solution for any industrial drainage need.

- Suitable for all common floor types, for instance concrete, tiled and flexible-sheet flooring
- Wide range of gratings for medium to heavy weight loads
- Removable water trap with excellent self-cleansing properties and easy rodding access
- Ease of installation, adjustable height
- No corners or cavities inside
- Smooth surface and aesthetical appearance

Commercial

Industrial



### Where to use it

Commercial kitchens, food and beverage industry, chemical and pharmaceutical industry

## BLÜCHER® Channel

BLÜCHER offers a wide range of drainage channels in stainless steel suitable for any linear drainage requirement for instance in the industry, onboard ships and in commercial kitchens.

- Combinable with the BLÜCHER® floor drains range
- Gratings suitable for medium to heavy weight loads
- Integrated fall
- Excellent flow and self-cleansing capacities
- No corners or cavities inside
- Highest level of stability and resistance to deformation
- Easy to inspect visually



Commercial

Industrial



### Where to use it

Commercial kitchens, food and beverage industry, chemical and pharmaceutical industry

## BLÜCHER® Drain Marine

BLÜCHER® drains for marine applications are stainless steel drains for use on ships and off-shore installations, developed in co-operation with leading ship yards.

- Drains for all commonly used deck and floor types
- Removable water trap with excellent self-cleansing properties
- Adjustable to fit into the finished deck and flooring
- Hygienic, easy to clean, no maintenance required
- Long lifetime
- Drains A60 MED certified
- Special flange solution for welding into aluminium structures

### Marine



### Where to use it

In cabins, toilets, showers, engine rooms and deck areas onboard ships and off-shore installations

## BLÜCHER® EuroPipe

Compared with traditional pipe systems labour and material savings can be considerable when using the easy push-fit drainage system BLÜCHER® EuroPipe.

- Available in OD 50, 75, 82, 110, 125, 160, 200 and 250 mm in standard lengths from 0.15 to 6 metres
- Fast and simple installation due to push-fit socket and spigot end jointing
- Weight is one third of cast-iron pipes
- Easily combined with other pipe materials
- Fire resistant in accordance with IMO Res. A. 754(18) approval class A0-A60
- Completely inter-changeable between vacuum and gravity installations



Housing

Commercial

Industrial

Marine

### Where to use it

Blocks of flats, hospitals, commercial kitchens, food and beverage industry, chemical and pharmaceutical industry, black & grey water installations onboard ships



## Customised solutions

In addition to the extensive range of standard products, BLÜCHER offers custom-made drainage products on request to fulfil any drainage requirement.

Our know-how enables us to provide extensive engineering assistance. Please contact our sales department to get the drainage solution that suits exactly your needs.



## Selected references

- Coca-Cola Company
- Colgate-Palmolive
- Danone
- Fincantieri Shipyard
- Heathrow Airport
- Heineken
- Hilton Hotel
- Kvaerner Masa Yard
- Marriott Hotel
- Meyer Werft Shipyard
- Kellogg's
- Pfizer
- Sheraton Hotel
- St. Paul's Cathedral
- Sydney Opera House

### Housing



### Commercial



### Industrial



### Marine



# BLÜCHER®

At BLÜCHER® more than 300 employees create an annual turnover of more than 50 million euro. Through know-how, dedicated service and common sense we develop, produce and market high quality stainless steel drainage solutions for customers within the housing, commercial, industrial and marine sectors all over the world.

Find your local BLÜCHER® specialist at [www.blucher.com](http://www.blucher.com)

**BLÜCHER® EuroPipe**

**BLÜCHER® Channel**

**BLÜCHER® Drain**



**BLÜCHER**

Pugdalsevej 1

DK-7480 Vildbjerg

Tel. +45 99 92 08 00

Fax +45 99 92 08 30

[mail@blucher.com](mailto:mail@blucher.com)

[www.blucher.com](http://www.blucher.com)



KEEPING UP THE FLOW