

FULL SPEED



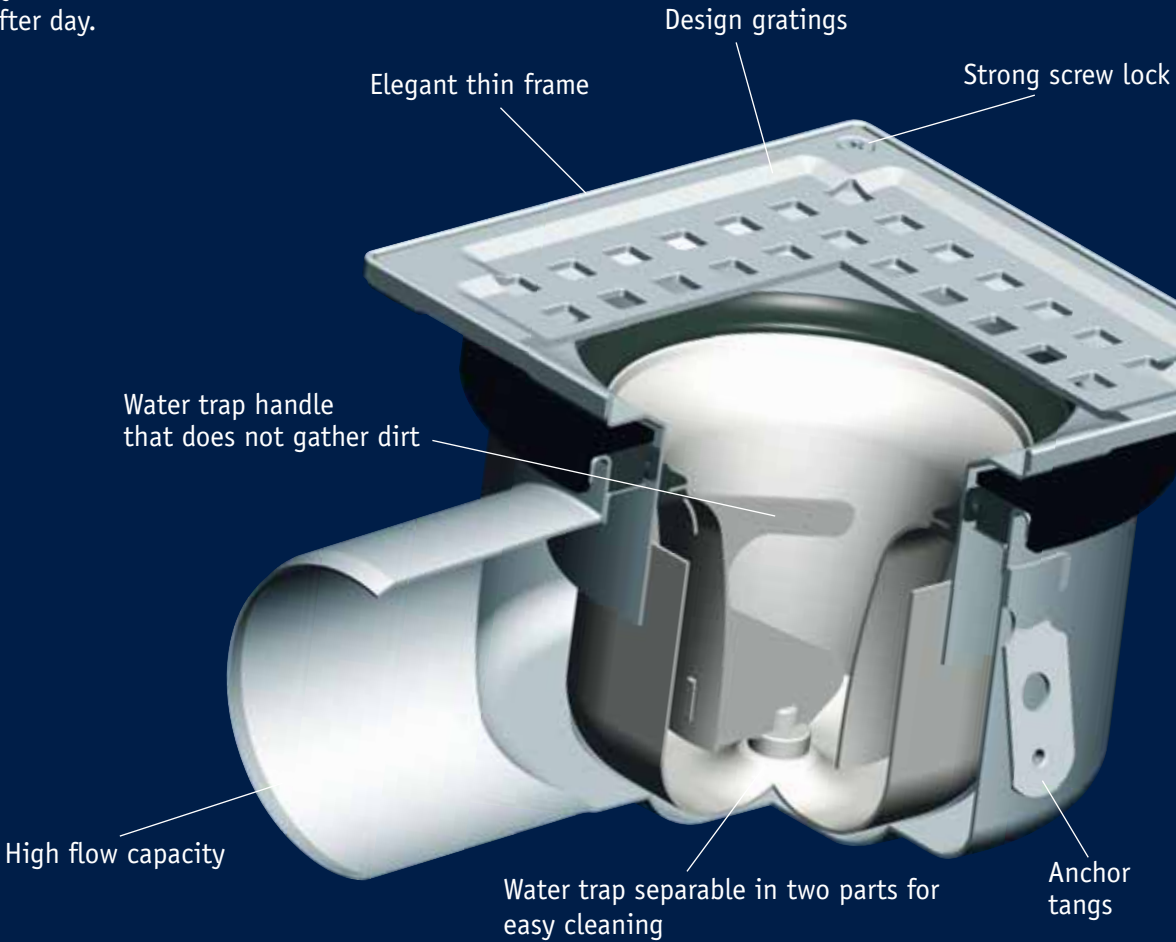
New light-duty drains with
excellent flow capacities

BLÜCHER®

KEEPING UP THE FLOW

New perspective on domestic drains

New features giving you a functional and elegant drain. Day after day.



BLÜCHER® DRAIN - new possibilities

BLÜCHER is widely known for developing innovative and sustainable solutions setting new standards for stainless steel drainage. Through creativity, common sense and craftsmanship, we provide you with brand new possibilities.

BLÜCHER® DRAIN Domestic combines improved capacity with simple and easy installation and practically no cleaning.

All drains are optimised to the highest standards. Strong screw lock, anchor tangs and an elegant frame. Not to mention - the best water trap available.

Intensive research and realtime tests have resulted in a water trap with an extremely high flow capacity of 1.4-1.7 l/s for a light-duty drain. The high flow capacity and the design practically render cleaning superfluous. If you need to take up the water trap, a handle gives you easy access, and the water trap can be separated into two parts for quick cleaning.





Strong screwlock

Do you often remove the grating? The new Starlock screwlock system is a safe solution that will last year after year no matter how often you loosen and fasten the grating.

The screwlock is now stronger with better fixing, and a new disc locks the screw to the grating so it does not fall off.



Anchor tangs

Anchor tangs are now standard on all lower parts.

This allows quick fixing of the drain onto wooden beams or concrete.

Adjustable legs and mounting plate are also new accessories.



Unique water trap

PATENT
PENDING

The best water trap in the market:

- High flow capacity: 1.4-1.7 l/s
- Excellent self-cleaning properties
- Separates for easy cleaning
- Functional handle design that does not collect dirt
- New filter basket



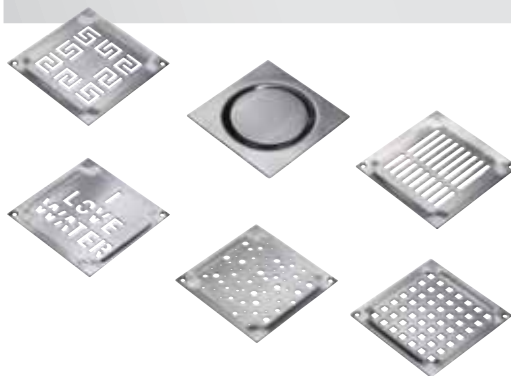
Water trap and filter basket to be ordered separately.



Elegant frame

With the new thin frame you achieve an elegant result.
Only 3 mm wide, the frame becomes almost invisible and sets off the design of the grating.

The frame does not add to the size of the grating, meaning that the drain fits perfectly into 150x150 mm tiles without cutting.



Spectacular designs

Whether you prefer classic or modern, you will find a grating that matches your style.

Choose, for example, between raw Detroit or trendy New York. All designs are available in 150x150 mm or 200x200 mm. All designs are also available in triangular or line shape.

Please notice that all standard square drains are delivered with the Vienna grating. The other types of gratings are available as optional extras.



More information

You will find all BLÜCHER® Drains online in our products database at www.blucher.com

NEW!

At www.blucher.com you will find new instructional videos that guide you through easy installation.



KEEPING UP THE FLOW

At BLÜCHER® more than 300 employees create an annual turnover of plus 50 million euro.
Through know-how, dedicated service and common sense we develop, produce and market high quality stainless steel drainage solutions for customers within the housing, commercial, industrial and marine sectors all over the world.

Find your local BLÜCHER® specialist at www.blucher.com



BLÜCHER® EuroPipe

BLÜCHER® Channel

BLÜCHER® Drain



KEEPING UP THE FLOW